



AIRFRAME:

AIRCRAFT TOTAL TIME: 4664

AIRCRAFT LANDINGS: 2022

2007 CHALLENGER 850

Serial Number: 8052

Registration Number: TC-GHP

Price: Inquire

ENGINES:

		TSN	CSN
L	GE CF34-3B1	4521	4664
R		1960	2017

APU:

	TSN
HONEYWELL GTCP36-150	5354

HIGHLIGHTS:

- Airframe/ Engines/ APU on %100 maintenance programs
- Dual PATS fuel tanks for extended range
- 15-passenger VIP configuration
- Airshow 410 Flight Information System
- EU-OPS certified
- Integrated Rockwell Collins Pro Line 4 avionics suite
- RVSM; MNPS; RNP 10 compliant
- In Flight Phone ICS-200 Two-Channel Iridium Satellite telephone System w/three (3) wired handsets Aero H SatCor

*Specifications and/or descriptions are provided as introductory information only and do not constitute representations or warranties. Verification of specifications remain the sole responsibility of purchaser. Aircraft is subject to prior sale, lease and/or removal from the market without prior notice. Specifications as of July 2019.

2007 CHALLENGER 850

Serial Number: 8052

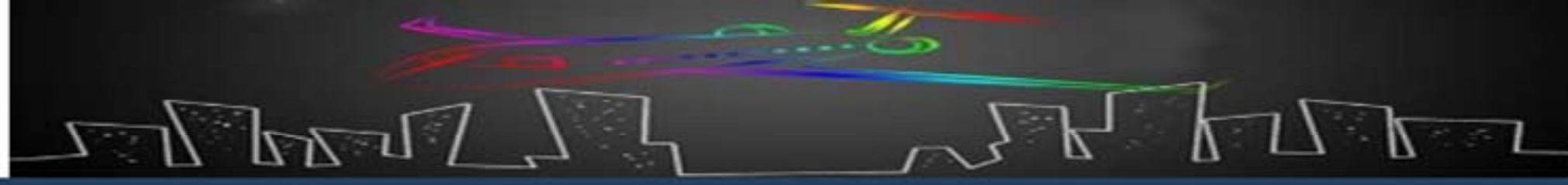
Registration Number: TC-GHP

Price: Inquire

AVIONICS:

- EFIS 4-Tube Collins Pro Line 4
- FMS Dual Collins FMC-4200
- GPS Dual Collins GPS-4000A
- MADC Dual Collins 822-0375-445
- DME Dual Collins DME-442
- ADF Dual Collins ADF-462
- EICAS Dual Collins 622-9810016
- ELT Single Artex ELT-C406-2
- VHF COM Dual Collins VHF-422C
- HF COM Dual Collins HF-9000
- SATCOM Single Aero H SATCOM
- RADAR Single Collins RTA-844
- RADAR ALT Dual Collins ALT55B
- XPNDR Dual Collins TDR-94D
- EGPWS Single Honeywell Enhanced MK V EGPWS
- TCAS II Single Collins TTR-921 w/change 7
- AUTOPILOT Dual Collins FCC-4000
- CVR Single L-3 Communications FA-2100
- FDR Single L-3 Communications FA-2100

*Specifications and/or descriptions are provided as introductory information only and do not constitute representations or warranties. Verification of specifications remain the sole responsibility of purchaser. Aircraft is subject to prior sale, lease and/or removal from the market without prior notice. Specifications as of July 2019.



2007 CHALLENGER 850

Serial Number: 8052

Registration Number: TC-GHP

Price: Inquire

<p>INTERIOR:</p>	<ul style="list-style-type: none"> • Cabin Layout: <ul style="list-style-type: none"> • VIP Seating for 15 People • Four (4) executive club seats with foldout tables • 3-place divan opposite two (2) executive club seats • Four (4) place executive conference group opposite two (2) executive club • Galley Location Forward • Lavatory Location(s) Forward crew lavatory and fully enclosed aft lavatory • Jumpseat available • Contains mid-cabin divider, aft lavatory, and storage space for life rafts
<p>EXTERIOR:</p>	<ul style="list-style-type: none"> • upper fuselage painted white, bottom fuselage painted dark blue with white stripes
<p>INSPECTION:</p>	<ul style="list-style-type: none"> • Landing gear 10 year inspections performed on June 2017. • 12 mos cards due on Feb 2020 • 24/48 mos cards due on Apr/May 2020 • 96 mos cards due on May 2024

*Specifications and/or descriptions are provided as introductory information only and do not constitute representations or warranties. Verification of specifications remain the sole responsibility of purchaser. Aircraft is subject to prior sale, lease and/or removal from the market without prior notice. Specifications as of July 2019.



2007 CHALLENGER 850

Serial Number: 8052

Registration Number: TC-GHP

Price: Inquire

PHOTOS:





2007 CHALLENGER 850

Serial Number: 8052

Registration Number: TC-GHP

Price: Inquire

PHOTOS:





2007 CHALLENGER 850

Serial Number: 8052

Registration Number: TC-GHP

Price: Inquire

PHOTOS:





2007 CHALLENGER 850

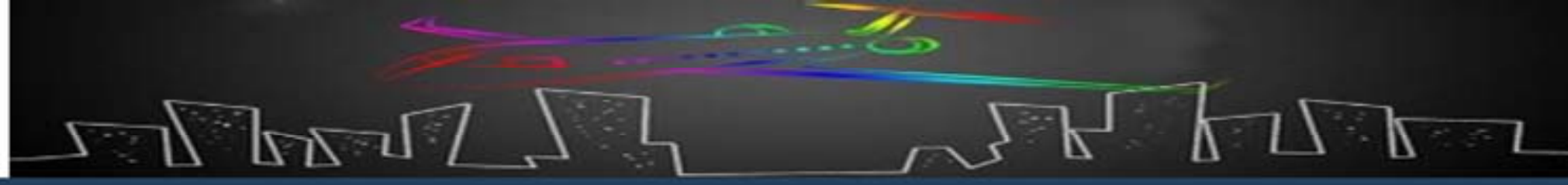
Serial Number: 8052

Registration Number: TC-GHP

Price: Inquire

PHOTOS:





2007 CHALLENGER 850

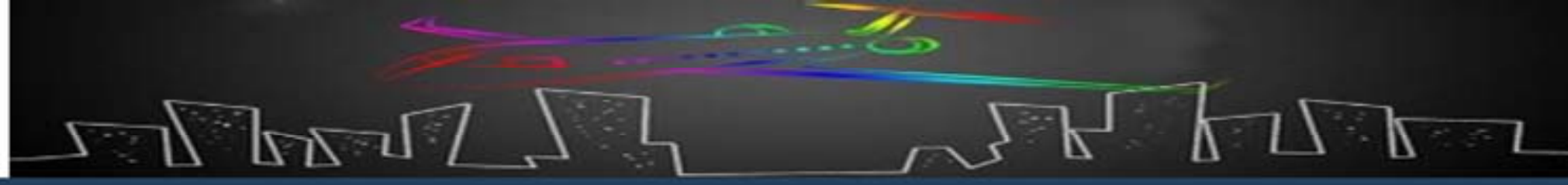
Serial Number: 8052

Registration Number: TC-GHP

Price: Inquire

PHOTOS:





2007 CHALLENGER 850

Serial Number: 8052

Registration Number: TC-GHP

Price: Inquire

PHOTOS:





2007 CHALLENGER 850

Serial Number: 8052

Registration Number: TC-GHP

Price: Inquire

PHOTOS:

